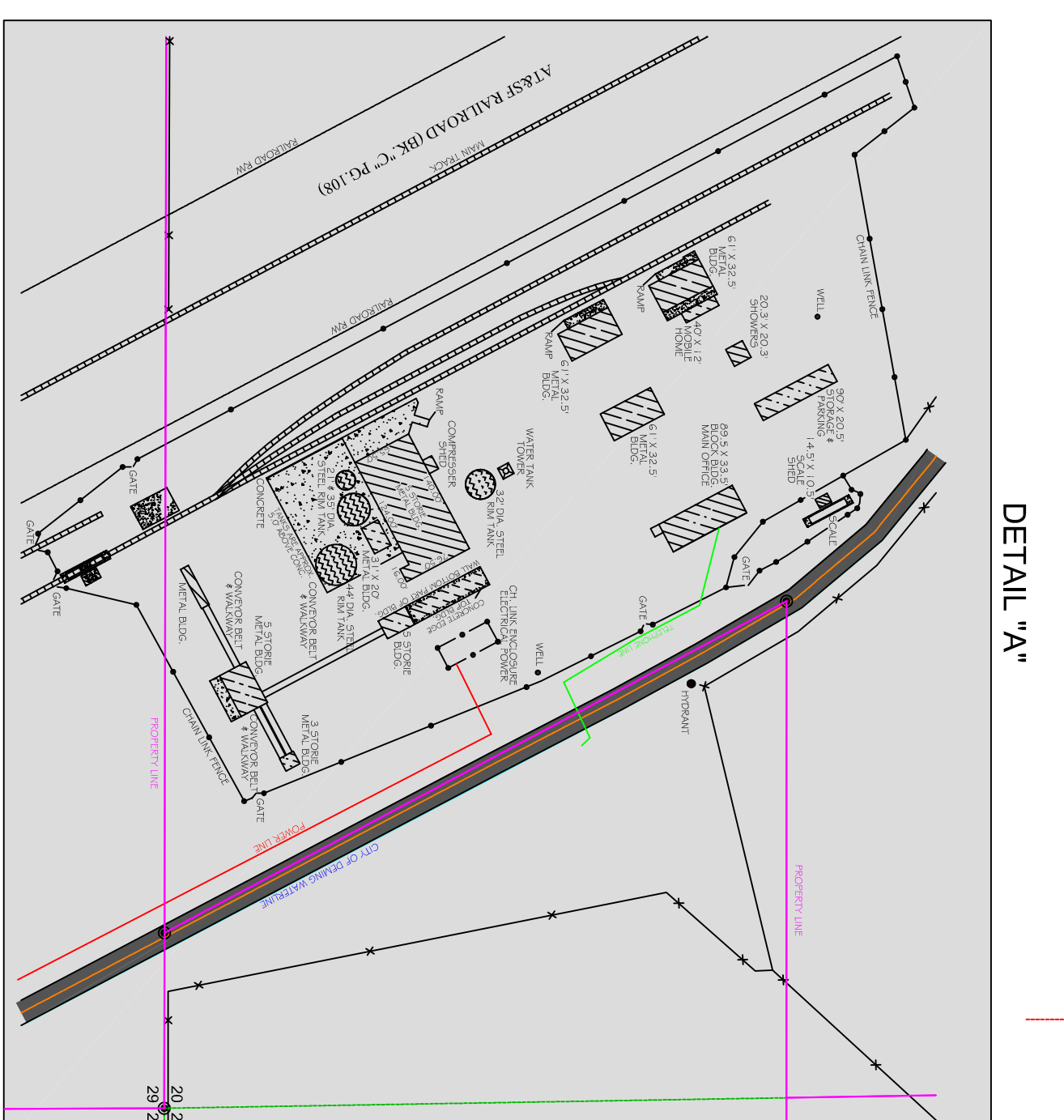
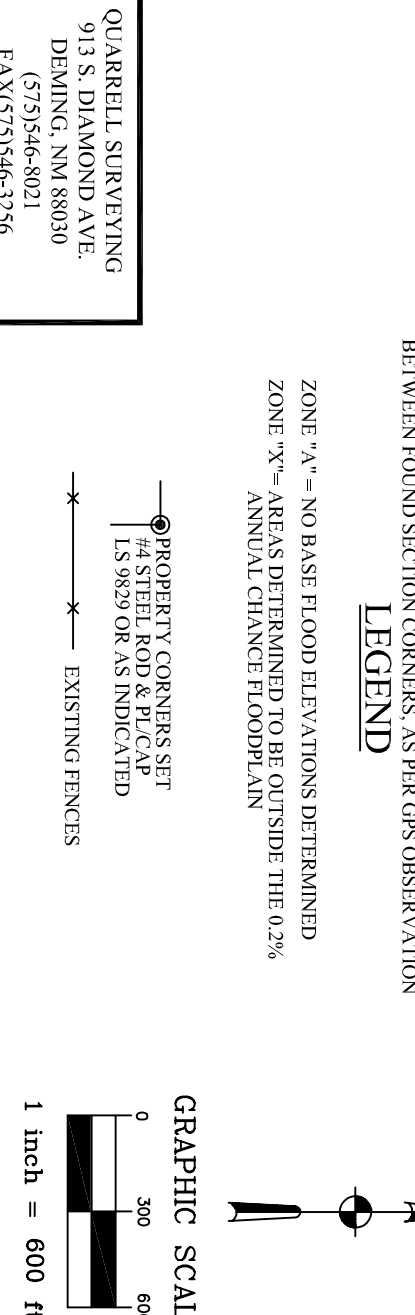
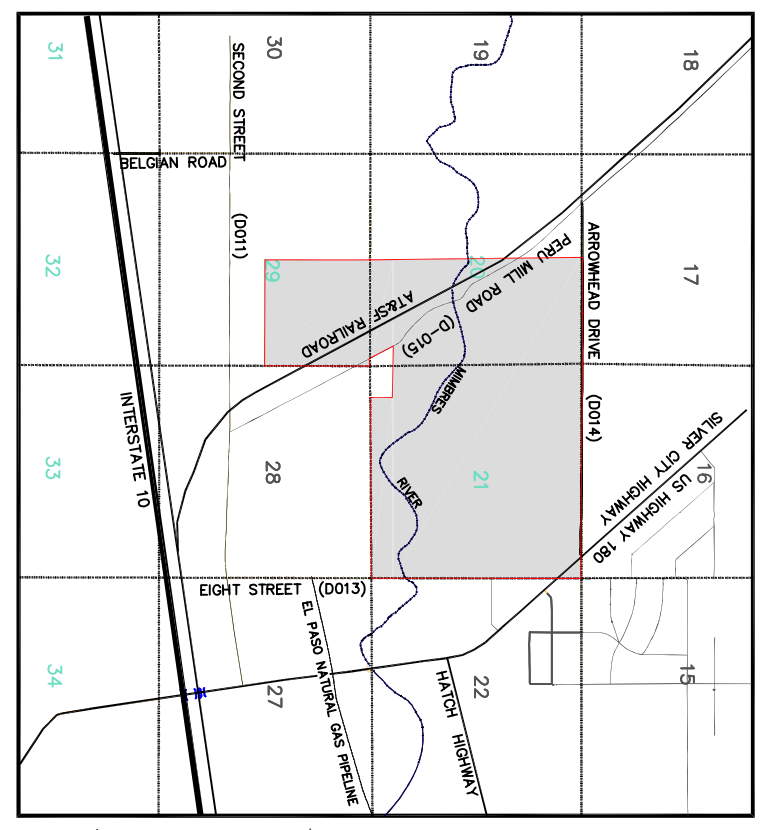
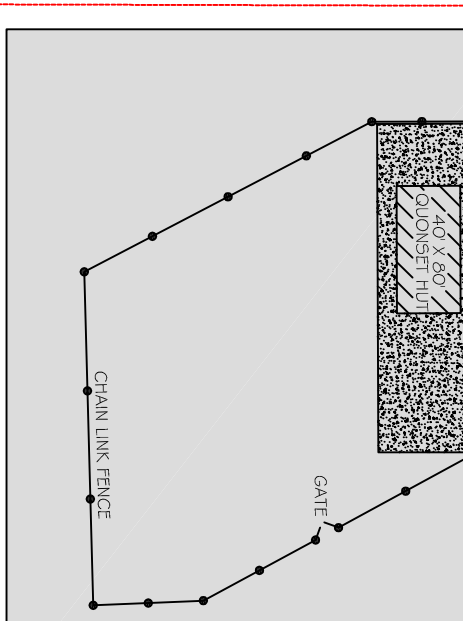
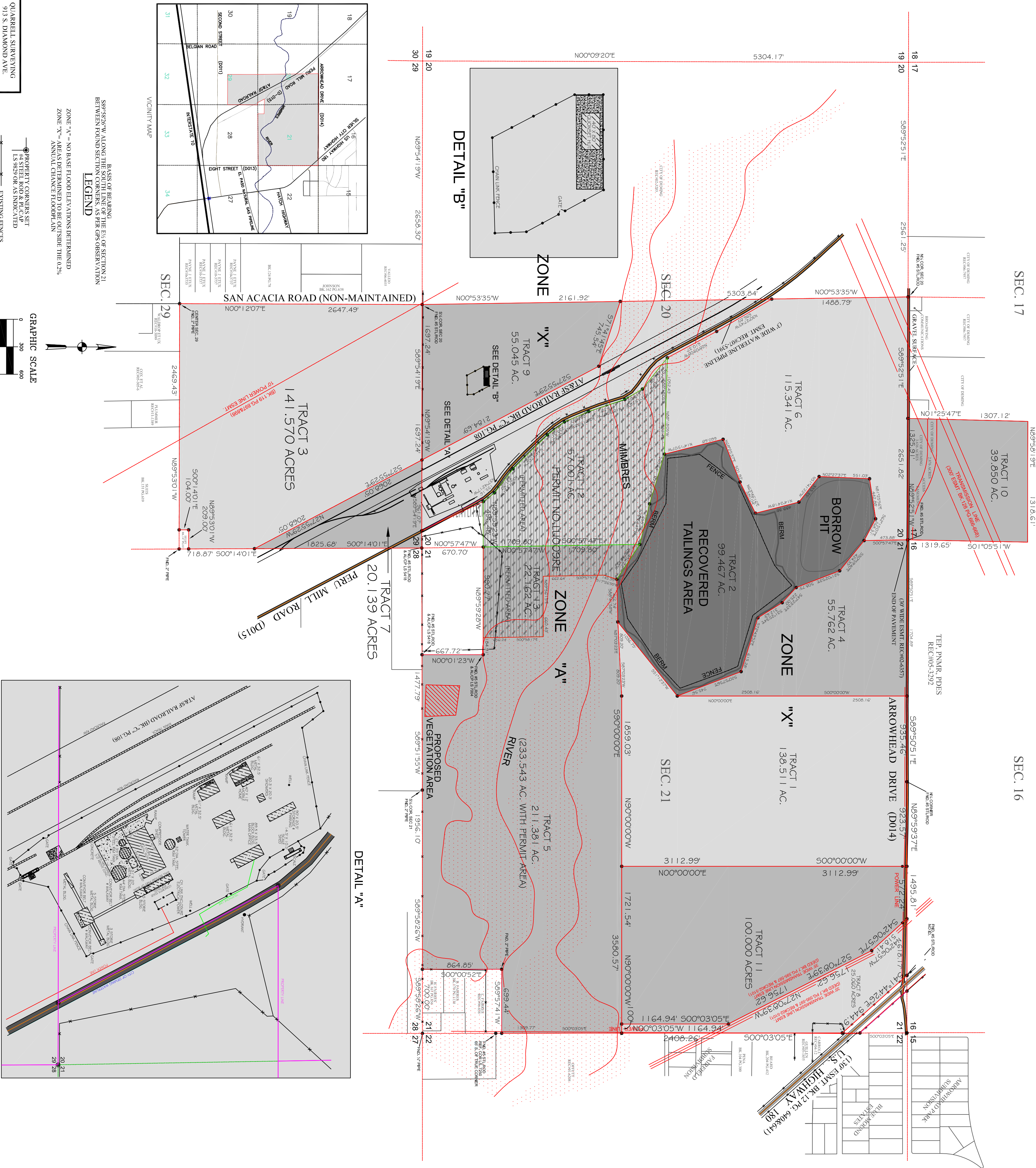


**SURVEY PLAT OF
CERTAIN TRACTS OF LAND IN SECTIONS 17, 20, 21 AND 29,
T23S, R9W OF THE N.M.P.M. IN LUNA COUNTY, NEW MEXICO**

FLOOD ZONE INFORMATION (FROM):
A MAJORITY OF THIS PROJECT SITE LIES WITHIN FLOOD DESIGNATION ZONE "X", AS AN AREA DETERMINED TO BE OUTSIDE THE 500-YEAR FLOOD PLAN, THE PORTIONS LYING WITHIN FLOOD DESIGNATION ZONE "V", AN AREA DETERMINED TO BE INSIDE TO 500-YEAR FLOOD PLAN, ARE GEOTECHNICALLY PLOTTED HEREIN AS INCORPORATED AREAS EFFECTIVE OCTOBER 19, 2010.



DESCRIPTION
TRACT 1
A TRACT OF LAND SITUATE IN SECTION 21, T23S, R9W OF THE N.M.P.M. IN LUNA COUNTY, NEW MEXICO AND BEING DESCRIBED AS FOLLOWS:
BEGINNING AT THE NW CORNER OF THE TRACT HEREIN DESCRIBED, WHICH POINT BEARS S89°50'51"E, ALONG THE NORTH LINE OF THE NORTHWEST QUARTER (NW/4) OF SECTION 21, 1704.69 FEET FROM THE NW CORNER OF SAID SECTION 21, THENCE S89°50'51"E, ALONG SAID NORTH LINE OF SAID SECTION 21, 473.66 FEET FROM THE NW CORNER OF SAID SECTION 20, THENCE S50°59'54.01"E, 424.35 FEET TO A POINT; THENCE S2°1'02.53"E, 312.63 FEET TO A POINT; THENCE S72°43'55"E, 615.28 FEET TO A POINT; THENCE S20°57'55"E, 745.56 FEET TO A POINT; THENCE S91°1'23.7"W, 1056.75 FEET TO A POINT; THENCE S68°41'58"W, 466.74 FEET TO A POINT; THENCE N6°39'23.2"W, 456.22 FEET TO A POINT; THENCE N76°24'47"W, 455.25 FEET TO A POINT; THENCE N73°22'24"W, 565.64 FEET TO A POINT; THENCE N4°15'07"W, 580.04 FEET TO A POINT; THENCE N4°52'16"E, 489.96 FEET TO A POINT; THENCE W51°41'42"E, 355.35 FEET TO A POINT; THENCE N02°27'37"E, 51.03 FEET TO A POINT; THENCE N41°25'56"E, 442.68 FEET; THENCE S62°15'07"E, 268.31 FEET TO THE POINT OF BEGINNING. THIS TRACT CONTAINS 99.467 ACRES MORE OR LESS AND IS SUBJECT TO RESERVATIONS, RESTRICTIONS AND EASEMENTS OF RECORD.

DESCRIPTION
TRACT 9
A TRACT OF LAND SITUATE IN SECTION 21, T23S, R9W OF THE N.M.P.M. IN LUNA COUNTY, NEW MEXICO AND BEING DESCRIBED AS FOLLOWS:
BEGINNING AT THE NW CORNER OF THE TRACT HEREIN DESCRIBED, WHICH POINT BEARS N69°59'37"E, ALONG THE EAST LINE OF SAID SECTION 21, THENCE CONTINUING N69°59'37"E, 410.14525 FEET NORTH LINE OF THE NORTHWEST QUARTER (NW/4) OF SAID SECTION 21, THENCE S4°14'42"E, ALONG THE WEST RIGHT-OF-WAY U.S. HIGHWAY 180, 944.91 FEET TO THE SE CORNER OF THIS TRACT; THENCE S00°00'00"E, 100.00 FEET TO THE SW CORNER OF THIS TRACT; THENCE N89°00'00"W, 100.00 FEET TO THE SE CORNER OF THIS TRACT; THENCE N89°59'41"W, ALONG THE WEST RIGHT-OF-WAY OF SAID SECTION 21, 2406.56 FEET TO THE POINT OF BEGINNING. THIS TRACT CONTAINS 121.6624 ACRES MORE OR LESS AND IS SUBJECT TO RESERVATIONS, RESTRICTIONS AND EASEMENTS OF RECORD.

DESCRIPTION
TRACT 2
A TRACT OF LAND SITUATE IN THE WEST HALF (W/2) OF SECTION 21 AND THE EAST HALF (E/2) OF SECTION 20, T23S, R9W OF THE N.M.P.M. IN LUNA COUNTY, NEW MEXICO AND BEING DESCRIBED AS FOLLOWS:
BEGINNING AT A POINT OF THE TRACT HEREIN BEING DESCRIBED, WHICH POINT BEARS S00°57'47"E, ALONG THE EAST LINE OF SAID SECTION 20, 473.66 FEET FROM THE NE CORNER OF SAID SECTION 20, THENCE S00°59'54.01"E, 424.35 FEET TO A POINT; THENCE S2°1'02.53"E, 312.63 FEET TO A POINT; THENCE S72°43'55"E, 615.28 FEET TO A POINT; THENCE S20°57'55"E, 745.56 FEET TO A POINT; THENCE S91°1'23.7"W, 1056.75 FEET TO A POINT; THENCE S68°41'58"W, 466.74 FEET TO A POINT; THENCE N6°39'23.2"W, 456.22 FEET TO A POINT; THENCE N76°24'47"W, 455.25 FEET TO A POINT; THENCE N73°22'24"W, 565.64 FEET TO A POINT; THENCE N4°15'07"W, 580.04 FEET TO A POINT; THENCE N4°52'16"E, 489.96 FEET TO A POINT; THENCE W51°41'42"E, 355.35 FEET TO A POINT; THENCE N02°27'37"E, 51.03 FEET TO A POINT; THENCE N41°25'56"E, 442.68 FEET; THENCE S62°15'07"E, 268.31 FEET TO THE POINT OF BEGINNING. THIS TRACT CONTAINS 99.467 ACRES MORE OR LESS AND IS SUBJECT TO RESERVATIONS, RESTRICTIONS AND EASEMENTS OF RECORD.

DESCRIPTION
TRACT 10
ALL OF THE SOUTHEAST QUARTER (SE/4) OF SECTION 17, T23S, R9W OF THE N.M.P.M. IN LUNA COUNTY, NEW MEXICO AND BEING DESCRIBED AS FOLLOWS:
BEGINNING AT THE NW CORNER OF THE TRACT HEREIN DESCRIBED, WHICH POINT IS THE SE CORNER OF SAID SECTION 17, 1327.42 FEET FROM THE NW CORNER OF SAID SECTION 20, THENCE S00°00'00"W, 100.00 FEET TO THE SE CORNER OF SAID SECTION 20, THENCE N07°33'35"W, ALONG THE NORTH-SOUTH CENTER SECTION LINE OF SAID SECTION 20, 2161.92 FEET TO THE NW CORNER OF THIS TRACT; THENCE S71°14'14"E, 745.54 FEET TO THE NE CORNER OF THIS TRACT; THENCE S27°55'28"E, ALONG THE WEST RIGHT-OF-WAY OF THE #1 #8 PAVEMENT, 2164.69 FEET TO THE SE CORNER OF THIS TRACT; THENCE N89°59'41"W, ALONG THE WEST RIGHT-OF-WAY OF SAID SECTION 21, 2406.56 FEET TO THE POINT OF BEGINNING. THIS TRACT CONTAINS 121.6624 ACRES MORE OR LESS AND IS SUBJECT TO RESERVATIONS, RESTRICTIONS AND EASEMENTS OF RECORD.

DESCRIPTION
TRACT 3
A TRACT OF LAND SITUATE IN THE NORTHEAST QUARTER (NE/4) OF SECTION 29, T23S, R9W OF THE N.M.P.M. IN LUNA COUNTY, NEW MEXICO AND BEING DESCRIBED AS FOLLOWS:
BEGINNING AT THE NORTH QUARTER (N/4) CORNER OF SAID SECTION 29, WHICH POINT IS THE NW CORNER OF THE TRACT HEREIN DESCRIBED, WHICH POINT BEARS S69°59'37"E, ALONG THE NORTH LINE OF SAID SECTION 29, 1704.69 FEET FROM THE NW CORNER OF SAID SECTION 21, THENCE S89°50'51"E, ALONG SAID NORTH LINE OF SAID SECTION 21, 473.66 FEET FROM THE NW CORNER OF SAID SECTION 20, THENCE S50°59'54.01"E, 424.35 FEET TO A POINT; THENCE S2°1'02.53"E, 312.63 FEET TO A POINT; THENCE S72°43'55"E, 615.28 FEET TO A POINT; THENCE S20°57'55"E, 745.56 FEET TO A POINT; THENCE S91°1'23.7"W, 1056.75 FEET TO A POINT; THENCE S68°41'58"W, 466.74 FEET TO A POINT; THENCE N6°39'23.2"W, 456.22 FEET TO A POINT; THENCE N76°24'47"W, 455.25 FEET TO A POINT; THENCE N73°22'24"W, 565.64 FEET TO A POINT; THENCE N4°15'07"W, 580.04 FEET TO A POINT; THENCE N4°52'16"E, 489.96 FEET TO A POINT; THENCE W51°41'42"E, 355.35 FEET TO A POINT; THENCE N02°27'37"E, 51.03 FEET TO A POINT; THENCE N41°25'56"E, 442.68 FEET; THENCE S62°15'07"E, 268.31 FEET TO THE POINT OF BEGINNING. THIS TRACT CONTAINS 99.467 ACRES MORE OR LESS AND IS SUBJECT TO RESERVATIONS, RESTRICTIONS AND EASEMENTS OF RECORD.

DESCRIPTION
TRACT 4
A TRACT OF LAND SITUATE IN THE SOUTHWEST QUARTER (SW/4) OF SECTION 17, T23S, R9W OF THE N.M.P.M. IN LUNA COUNTY, NEW MEXICO AND BEING DESCRIBED AS FOLLOWS:
BEGINNING AT THE NW CORNER OF THE TRACT HEREIN DESCRIBED, WHICH POINT IS THE SE CORNER OF SAID SECTION 17, 1327.42 FEET FROM THE NW CORNER OF SAID SECTION 20, THENCE S00°00'00"W, 100.00 FEET TO THE SE CORNER OF SAID SECTION 20, THENCE N07°33'35"W, ALONG THE NORTH-SOUTH CENTER SECTION LINE OF SAID SECTION 20, 2161.92 FEET TO THE NW CORNER OF THIS TRACT; THENCE S71°14'14"E, 745.54 FEET TO THE NE CORNER OF THIS TRACT; THENCE S27°55'28"E, ALONG THE WEST RIGHT-OF-WAY OF THE #1 #8 PAVEMENT, 2164.69 FEET TO THE SE CORNER OF THIS TRACT; THENCE N89°59'41"W, ALONG THE WEST RIGHT-OF-WAY OF SAID SECTION 21, 2406.56 FEET TO THE POINT OF BEGINNING. THIS TRACT CONTAINS 121.6624 ACRES MORE OR LESS AND IS SUBJECT TO RESERVATIONS, RESTRICTIONS AND EASEMENTS OF RECORD.

DESCRIPTION
TRACT 5
A TRACT OF LAND SITUATE IN SECTION 21, T23S, R9W OF THE N.M.P.M. IN LUNA COUNTY, NEW MEXICO AND BEING DESCRIBED AS FOLLOWS:
BEGINNING AT THE NW CORNER OF THIS TRACT, WHICH POINT BEARS S89°59'26"W, ALONG THE SOUTH LINE OF SAID SECTION 21, 700.00 FEET FROM THE SE CORNER OF SAID SECTION 21; THENCE CONTINUING S89°59'26"W, ALONG SAID SOUTH LINE OF SAID SECTION 21, 1986.10 FEET TO THE SOUTH CORNER (SW/4) OF SAID SECTION 21, THENCE N00°01'23"W, 627.22 FEET TO A POINT; THENCE N89°59'26"W, 1477.79 FEET TO A POINT; THENCE N00°01'23"W, 627.22 FEET TO A POINT; THENCE N89°59'26"W, 164.91 FEET TO A POINT; THENCE N00°01'23"W, 556.24 FEET TO A POINT; THENCE S89°59'26"W, 660.45 FEET TO A POINT; THENCE N00°01'23"W, 662.64 FEET TO A POINT; THENCE N72°56'51"W, 149.99 FEET TO A POINT; THENCE N00°01'23"W, 609.20 FEET TO A POINT; THENCE S90°00'00"W, 366.00 FEET TO A POINT; THENCE N89°59'26"W, 698.00 FEET TO THE POINT OF BEGINNING. THIS TRACT CONTAINS 209.741 ACRES MORE OR LESS AND IS SUBJECT TO RESERVATIONS, RESTRICTIONS AND EASEMENTS OF RECORD.

DESCRIPTION
TRACT 6
A TRACT OF LAND SITUATE IN SECTION 21, T23S, R9W OF THE N.M.P.M. IN LUNA COUNTY, NEW MEXICO AND BEING DESCRIBED AS FOLLOWS:
BEGINNING AT THE SE CORNER OF THIS TRACT, WHICH POINT BEARS S89°59'26"W, ALONG THE SOUTH LINE OF SAID SECTION 21, 700.00 FEET FROM THE SE CORNER OF SAID SECTION 21; THENCE CONTINUING S89°59'26"W, ALONG SAID SOUTH LINE OF SAID SECTION 21, 1986.10 FEET TO THE SOUTH CORNER (SW/4) OF SAID SECTION 21, THENCE N00°01'23"W, 627.22 FEET TO A POINT; THENCE N89°59'26"W, 1477.79 FEET TO A POINT; THENCE N00°01'23"W, 627.22 FEET TO A POINT; THENCE N89°59'26"W, 164.91 FEET TO A POINT; THENCE N00°01'23"W, 556.24 FEET TO A POINT; THENCE S89°59'26"W, 660.45 FEET TO A POINT; THENCE N00°01'23"W, 662.64 FEET TO A POINT; THENCE N72°56'51"W, 149.99 FEET TO A POINT; THENCE N00°01'23"W, 609.20 FEET TO A POINT; THENCE S90°00'00"W, 366.00 FEET TO A POINT; THENCE N89°59'26"W, 698.00 FEET TO THE POINT OF BEGINNING. THIS TRACT CONTAINS 209.741 ACRES MORE OR LESS AND IS SUBJECT TO RESERVATIONS, RESTRICTIONS AND EASEMENTS OF RECORD.

DESCRIPTION
TRACT 7
A TRACT OF LAND SITUATE IN SECTION 20, T23S, R9W OF THE N.M.P.M. IN LUNA COUNTY, NEW MEXICO AND BEING DESCRIBED AS FOLLOWS:
BEGINNING AT THE NW CORNER OF THIS TRACT, WHICH POINT IS THE NORTH QUARTER CORNER (N/4) OF SAID SECTION 20, THENCE S89°59'37"E, ALONG THE NORTH LINE OF SAID SECTION 20, 2831.82 FEET FROM THE NW CORNER OF SAID SECTION 21, THENCE S00°57'47"E, ALONG THE EAST LINE OF SAID SECTION 20, 473.66 FEET TO A POINT; THENCE N62°1'07"W, 268.31 FEET TO A POINT; THENCE S81°25'56"E, 442.68 FEET TO A POINT; THENCE S02°27'37"W, 551.03 FEET TO A POINT; THENCE S63°46'16"E, 386.04 FEET TO A POINT; THENCE S14°24'18"E, 469.96 FEET TO A POINT; THENCE S63°46'16"E, 386.04 FEET TO A POINT; THENCE N60°51'19"W, 1052.43 FEET TO A POINT ON A LINE BEING APPROXIMATELY 40.00 FEET EAST OF THE CENTERLINE OF PERU MILL ROAD (COUNTY ROAD D013); THENCE N26°09'09"W, ALONG SAID LINE, 610.37 FEET TO A POINT; THENCE N03°27'45"W, 636.65 FEET TO A POINT AT THE INTERSECTION OF THE NORTH-SOUTH CENTER SECTION LINE OF SAID SECTION 20 AND THE NE CORNER OF SAID SECTION 21; THENCE S00°57'47"E, ALONG SAID NORTH LINE OF SAID SECTION 20, 2831.82 FEET TO THE POINT OF BEGINNING. THIS TRACT CONTAINS 115.341 ACRES MORE OR LESS AND IS SUBJECT TO RESERVATIONS, RESTRICTIONS AND EASEMENTS OF RECORD.

DESCRIPTION
TRACT 8
A TRACT OF LAND SITUATE IN THE SOUTHWEST QUARTER (SW/4) OF SECTION 21, T23S, R9W OF THE N.M.P.M. IN LUNA COUNTY, NEW MEXICO, BEING DESCRIBED AS FOLLOWS:
BEGINNING AT THE SE CORNER OF SAID SECTION 21, THENCE CONTINUING S89°59'41"W, ALONG SAID SECTION LINE, 1709.60 FEET TO THE NW CORNER OF THIS TRACT; THENCE S56°38'25"E, 456.22 FEET TO A POINT; THENCE S17°26'58"W, 145.99 FEET TO A POINT; THENCE S00°57'57"E, 662.64 FEET TO A POINT; THENCE N89°56'19"E, 660.43 FEET TO A POINT; THENCE N89°57'57"E, 627.22 FEET TO A POINT; THENCE S17°26'58"W, 145.99 FEET TO A POINT; THENCE S00°57'57"E, 662.64 FEET TO A POINT; THENCE N89°56'19"E, 660.43 FEET TO A POINT; THENCE N89°57'57"E, 627.22 FEET TO THE POINT OF BEGINNING. THIS TRACT CONTAINS 57.001 ACRES MORE OR LESS AND IS SUBJECT TO RESERVATIONS, RESTRICTIONS AND EASEMENTS OF RECORD.

DESCRIPTION
TRACT 9
A TRACT OF LAND SITUATE IN SECTION 21, T23S, R9W OF THE N.M.P.M. IN LUNA COUNTY, NEW MEXICO AND BEING DESCRIBED AS FOLLOWS:
BEGINNING AT THE SE CORNER OF THIS TRACT, WHICH POINT BEARS S89°59'26"W, ALONG THE SOUTH LINE OF SAID SECTION 21, 700.00 FEET FROM THE SE CORNER OF SAID SECTION 21; THENCE CONTINUING S89°59'26"W, ALONG SAID SOUTH LINE OF SAID SECTION 21, 1986.10 FEET TO THE SOUTH CORNER (SW/4) OF SAID SECTION 21, THENCE N00°01'23"W, 627.22 FEET TO A POINT; THENCE N89°59'26"W, 1477.79 FEET TO A POINT; THENCE N00°01'23"W, 627.22 FEET TO A POINT; THENCE N89°59'26"W, 164.91 FEET TO A POINT; THENCE N00°01'23"W, 556.24 FEET TO A POINT; THENCE S89°59'26"W, 660.45 FEET TO A POINT; THENCE N00°01'23"W, 662.64 FEET TO A POINT; THENCE N72°56'51"W, 149.99 FEET TO A POINT; THENCE N00°01'23"W, 609.20 FEET TO A POINT; THENCE S90°00'00"W, 366.00 FEET TO A POINT; THENCE N89°59'26"W, 698.00 FEET TO THE POINT OF BEGINNING. THIS TRACT CONTAINS 209.741 ACRES MORE OR LESS AND IS SUBJECT TO RESERVATIONS, RESTRICTIONS AND EASEMENTS OF RECORD.

DESCRIPTION
TRACT 11
A TRACT OF LAND SITUATE IN SECTION 21, T23S, R9W OF THE N.M.P.M. IN LUNA COUNTY, NEW MEXICO AND BEING DESCRIBED AS FOLLOWS:
BEGINNING AT THE NW CORNER OF THE TRACT HEREIN DESCRIBED, WHICH POINT BEARS S89°59'37"E, ALONG THE NORTH LINE OF SAID SECTION 21, 1704.69 FEET FROM THE NW CORNER OF SAID SECTION 20, THENCE S89°50'51"E, ALONG SAID NORTH LINE OF SAID SECTION 21, 473.66 FEET FROM THE NW CORNER OF SAID SECTION 20, THENCE S50°59'54.01"E, 424.35 FEET TO A POINT; THENCE S2°1'02.53"E, 312.63 FEET TO A POINT; THENCE S72°43'55"E, 615.28 FEET TO A POINT; THENCE S20°57'55"E, 745.56 FEET TO A POINT; THENCE S91°1'23.7"W, 1056.75 FEET TO A POINT; THENCE S68°41'58"W, 466.74 FEET TO A POINT; THENCE N6°39'23.2"W, 456.22 FEET TO A POINT; THENCE N76°24'47"W, 455.25 FEET TO A POINT; THENCE N73°22'24"W, 565.64 FEET TO A POINT; THENCE N4°15'07"W, 580.04 FEET TO A POINT; THENCE N4°52'16"E, 489.96 FEET TO A POINT; THENCE W51°41'42"E, 355.35 FEET TO A POINT; THENCE N02°27'37"E, 51.03 FEET TO A POINT; THENCE N41°25'56"E, 442.68 FEET; THENCE S62°15'07"E, 268.31 FEET TO THE POINT OF BEGINNING. THIS TRACT CONTAINS 99.467 ACRES MORE OR LESS AND IS SUBJECT TO RESERVATIONS, RESTRICTIONS AND EASEMENTS OF RECORD.

CERTIFICATION
Drawing, Luna County, New Mexico, October 4th, 2018.
I, Frank L. Quarrell, hereby certify that I am the Registered Land Surveyor who prepared this plat from notes of an actual survey conducted by me or under my direct supervision and that the same are true and correct to the best of my knowledge and belief. This plat meets the Minimum Requirements of the Standards for Land Surveying in New Mexico.
Frank L. Quarrell
Professional Land Surveyor
LS 9829

